

Installation and User Manual

Window adapter for portable air conditioners



Art. KL2567-150

Included in the Package:

- 1 x Installation and User Manual
- 1 x Windows Adapter Main Unit
- 2 x Holder Inserts with two Pre-assembled Mounting Plates (adhesive surface included)
- 1 x Ball Chain
- 1 x Hook-and-Loop Tape (soft and hook sides)
- 1 x Mounting Ring for Adapting to Different Hose Sizes (only included for orders with sizes other than 15 cm)

Dear Customer,

by purchasing this window adapter, you have chosen a high-quality product. Thanks to its flow optimized design, developed using thermal FEM analysis, you not only reduce the energy consumption of your portable air conditioner but also make a valuable contribution to climate protection.

Thanks to its modular design, your adapter can also be easily adjusted to fit less common hose sizes.

Should you encounter any issues, please do not hesitate to contact us. Use the eBay/Amazon contact form or simply send us an email directly at support@domus-technik.de. We are committed to assisting you quickly and efficiently. Your feedback helps us continuously improve our service.

Below, we would like to share some important information about the manufacturing process as well as the unique features of your product.

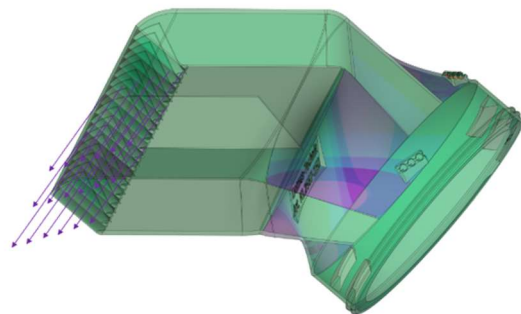


Abbildung 1: Thermal FEM Flow Analysis

About 3D Printing

3D printing is an innovative technology that enables the production of items locally and sustainably, without long delivery times, in small quantities, and with high precision. It allows us not only to manufacture replacement parts for products that have been out of production for years but also to address problems for which the industry offers no suitable solutions.

This process involves applying thousands of layers of heat-resistant plastic, each with a thickness of 0.1–0.25 mm, layer by layer over several hours. These individual layers are both visually and tactilely noticeable and are characteristic of the manufacturing process. Similarly, a typical 3D printing "seam," the area where the computer-controlled nozzle transitions from one layer to the next, is another distinctive feature. Both of these characteristics are inherent to the process and do not affect the functionality or quality of your product in any way.

Quality Control

All our products undergo a thorough quality control process before shipping, during which procedure- and model-specific features are carefully inspected. Nevertheless, we encourage you to closely examine your purchased product upon receipt. If you have any questions about its use or require assistance, please do not hesitate to contact us directly with your concerns.

Installation

To ensure the safe and effective use of your window adapter, we kindly ask you to follow all provided application and safety instructions.

(Pre-assembly is only required if a size other than a 15 cm hose diameter has been ordered)

Pre-assembly:

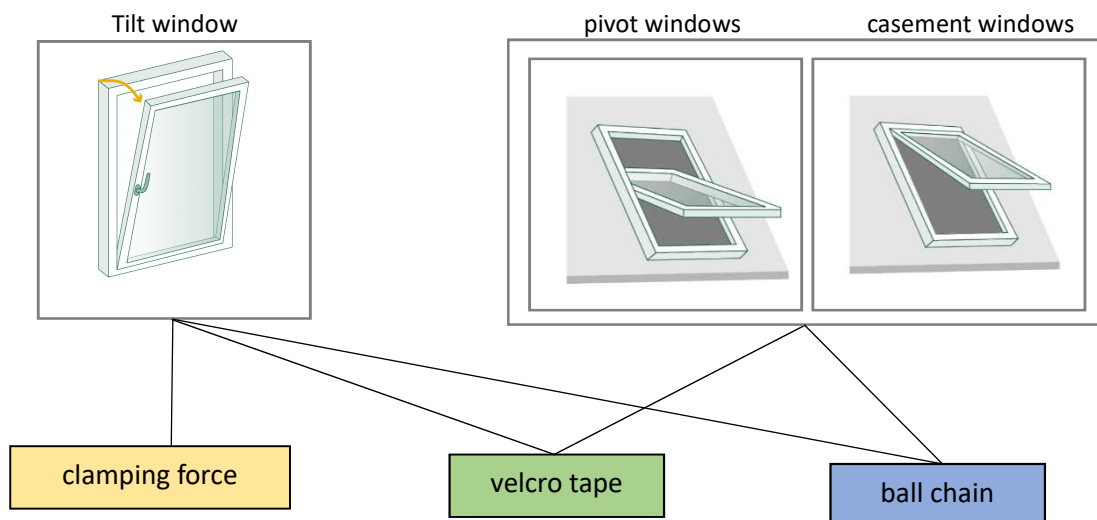
Connect the adapter ring by screwing it clockwise onto the lower ring of the main part. The ring should rotate smoothly onto the thread without much resistance. For best results, place the main part between your legs while seated and turn the adapter ring evenly with both hands. If the ring becomes misaligned, unscrew it and try again.

Step 1: Hose Installation:

Extend the end of the exhaust hose to its full length and screw it into the window adapter. The thread of your adapter is equally suitable for both left-hand and right-hand threads.

Step 2: Installation on the Window:

Open or tilt the window. Please note that the gap between the window sash and the frame must be at least 4 cm to ensure sufficient space for the adapter. For installation, choose one of the three preferred methods, depending on the type of window:



Clamping Force

Insert the window nozzle into the gap between the frame and the sash. The downward-pulling exhaust hose locks the adapter in place. The design and material of your adapter are built to securely handle the forces involved over many years. Depending on the direction of the exhaust hose pull, the adapter may slip back. If this occurs, we recommend using one of the following installation methods.

Velcro tape need: Velcro Tape (1x)

Check if the area on the adapter with the "Domus-Technik" lettering touches the window frame or sash in the installation position. If so, the Velcro tape installation is suitable. Otherwise, we recommend the following universal method using the ball chain.



Note: While the individual Velcro strips can be applied independently to the adapter and frame, this carries the risk that they may not be ideally aligned when assembled. For this reasons, we recommend the following procedure.

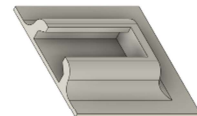
Remove the protective strip from one side of the Velcro tape and attach it to the flat area on the front using adhesive tape (see the area with the "Domus-Technik" lettering). Now, remove the protective strip from the outer Velcro strip as well. Position the adapter on the window. Press the adhesive connection for about 5 seconds to ensure a secure bond.

Ball Chain

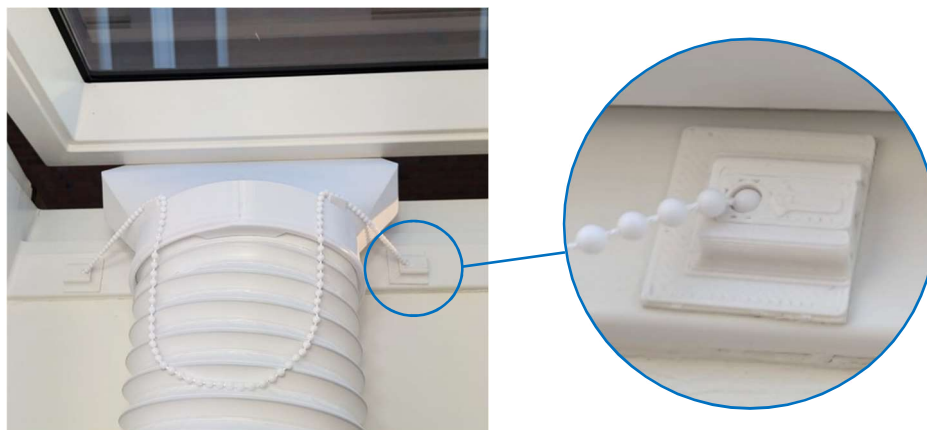
need: ball chain (1x)

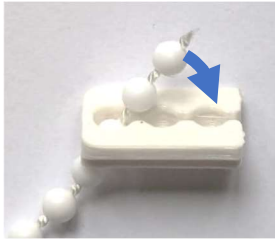
retention inserts (2x)

holding plates (2x)



Get a general overview using the following illustrations. Separate the connected individual parts (retention inserts and holding plates) using scissors.





To do this, insert the ends through a hole and secure them by pressing two balls into the indentations. If the balls cannot be pressed into the indentations with finger pressure, use a hard object to apply more force. Slide the retention inserts in the direction of the arrow (see the marking on the retention inserts) into the holding plates.

b) Glue the holding plates into position



For the next step, we recommend the assistance of a second person. Person A holds the adapter in position while Person B determines the ideal placement of the holding plates.

Note: Pay attention to the correct orientation of the holding plates, meaning the pulling force (see the arrow embossed on the retention insert) of the ball chain should not pull the retention inserts out of the glued holding plates (also refer to the close-up on the previous page). Additionally, the ball chain should still allow a small amount of play, so that the window adapter can be removed by pulling the retention inserts out of the mounting plates when it is not in use or when the window is closed.

Remove the protective strips from the adhesive surfaces and stick them into the final position, e.g., on the window frame. Ensure that the position of the attached holding plates does not interfere with the window's ability to close.

The ball chains can be pressed into the indentations several hundred times without compromising their holding function. Therefore, adjustment of the ball chains via the adapter-side mounting remains fully possible afterward, in case the holding plates have been glued on "too tightly."

Step 3: Operation

Ensure that all parts are correctly connected before use. Make sure that warm air can be expelled without obstruction. For example, this is not the case if the exhaust hose is sharply kinked. The airflow-optimized design of the air conditioner adapter allows operation without excessive heating of the air conditioner. However, we recommend using only mobile air conditioning units that comply with current EU standards (e.g., automatic shutdown in case of overload). If your unit becomes unusually hot compared to its use without the window adapter, turn it off immediately and contact our customer support at support@domus-technik.de.

Frequently Asked Questions

Q1. "Should the remaining window gap around the adapter be sealed?"

When operating a mobile air conditioner, the same amount of air that was expelled through the exhaust hose must flow back into the room. Providing fresh air intake as close as possible to the air conditioning unit has the advantage that the warm outside air does not heat the rest of the room but can be directly used by the air conditioner. Various types of window seals can be purchased inexpensively via Amazon/eBay but should always allow enough space for incoming air, for the reasons mentioned above. Depending on the installation location and gap size, we therefore advise against sealing the window gap.

Q2. "My skylight can no longer be locked with the adapter installed. What can I do?"

Locking the window with the adapter installed is generally not possible and is not intended. However, a window lock can be purchased and installed, for example, at a hardware store (5-10€). Common product names include: window limiters or skylight burglary protection.

Q3. "Unfortunately, I ordered the wrong size. What can I do?"

The window adapter is designed for the most common exhaust hose size of 15 cm but can be easily adjusted to fit any other hose diameter with a few simple steps. Corresponding adapter pieces are available through us.

Q4. „My hose end has no thread, it is just smooth. What's going on?“

Depending on the air conditioner manufacturer, there may be an end piece clipped onto the hose end. This must be removed before measuring the outer hose diameter and proceeding with the adapter installation. These end pieces are usually very tight but can be pried off with, for example, a screwdriver.